

# GREEN, CLEAN & PRACTICAL

## Cold Formed Steel Buildings

Ten reasons to conclude that “Cold Formed Steel Building Systems” offer an excellent sustainable building solution. A product friendly to the environment, superior in performance and longevity, easy to construct and deconstruct, pre-engineered and brought together in one simple marketing package thanks to ACT Dimensions.

- 1). Designed using at least 35% recycled materials
- 2). Designed to be 100% recyclable.
- 3). Designed responsibly for “Cradle to Grave” application. Insuring the ultimate useful life of any building product on the market today.
- 4). Designed for disassembly and reuse.
- 5). Designed for multi-level applications to minimize building footprint.
- 6). Designed for high seismic resistance.
- 7). Designed using non-combustible materials offering more resistance to fire dangers.
- 8). All structural and sub-structural components are G90 galvanized to give much higher resistance to rusting, mold and to offer a hypo-allergenic base in which to build a shelter.
- 9). A simple bolt and screw together building system designed for ease in construction by professionals and the DIY. Save time and money with our system while offering a green structure designed to stand up to nature's wrath.

### 10). Win, Win, Solutions

*“I have yet to find a building system that offers so many benefits to all parties involved, end users, contractors, manufacturers and engineers. ACT Dimensions has put a building business system together that brings it all together so that all can benefit from taking a simple commodity and creating a superior value added product at the most competitive pricing.”*

*Dan Loftis,*

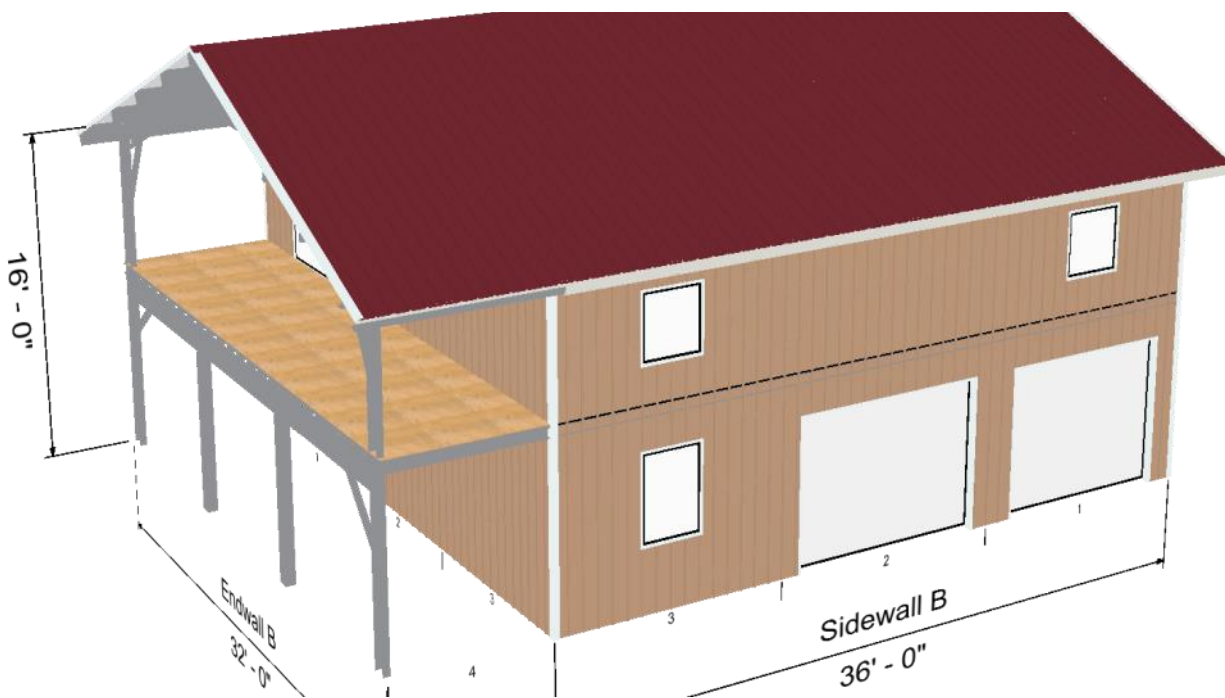
*CP Green Buildings LLC*



A cold formed steel building project erected by TNT Construction in Montana.

## In This Issue

- 10 reasons Cold Formed Steel Building Systems offer and excellent sustainable building solution.
- ACT as a primary business assistant
- ACT & its positive affects on your profit centers.



## The ACT Dimensions Design Software program is more than just a business tool it's a primary business assistant.

One really needs to see the ACT Dimensions Software work in order to truly appreciate the benefits to a company in the business of selling building systems. Maybe your company is a manufacturer of cold formed steel components or maybe your company is a general contracting business, maybe you're an entrepreneur looking for an opportunity to become self employed. The ACT Dimensions Business system is an opportunity worth studying.

CLL Limited has established two channels of distribution marketing Cold Formed Steel Building Systems. One working with roll forming companies manufacturing cold rolled Cee's and Zee's and the other teaming with OutBack Steel Buildings a group of individual entrepreneurs.

Both receive great benefits using the ACT Dimensions Software Package. What makes this more than just a software package is the positive contributions this business model provides for the business incorporating the use of ACT Dimensions, the cost and performance benefits for the end user and the ease and simplicity of erection for the contractor.

The ACT Dimensions Design Software system comes with complete structural engineering support providing stamped drawings, foundation design and calcs for 49 states.

The Act Dimensions Design Software System comes with support vendors able to supply building components, doors, insulation, fasteners and other building accessories priced in the software and delivered most anywhere in the lower 48 states.

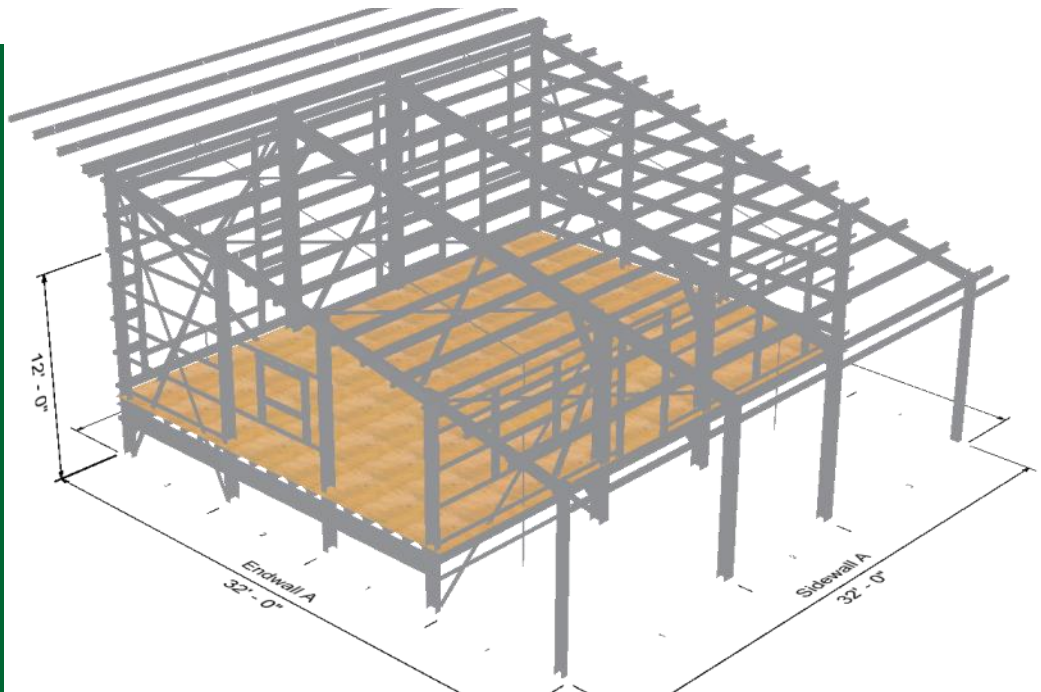
The ACT Dimensions Design Software System includes online video training, online marketing aides, construction manuals, purchase orders, complete structural material takeoffs, sales agreements, building model illustrations, and many more business tools to help entrepreneurs develop marketing packages and programs.

The business system developed using the ACT Dimensions design software moves most fixed traditional business costs to a variable cost saving businesses on their monthly expenses. Further more, options in the ACT Dimensions Software allow the user to be more productive with less need for executive support services and employees.

The ACT Dimensions Design Software System can design single sloped, gambrel, and standard vaulted peak building designs. The ACT System also designs multi story building systems, lean-to's open sheds and extended eaves.

# ACT Dimensions & OutBack Steel Bldgs

Incorporating The ACT Dimensions Software System with the OutBack Steel Buildings Distribution network allows the distributor to work from anywhere as long as there is access to the internet. This business system provides the utmost flexibility running a business from anywhere and still have access to any and all business information needed to complete your work.

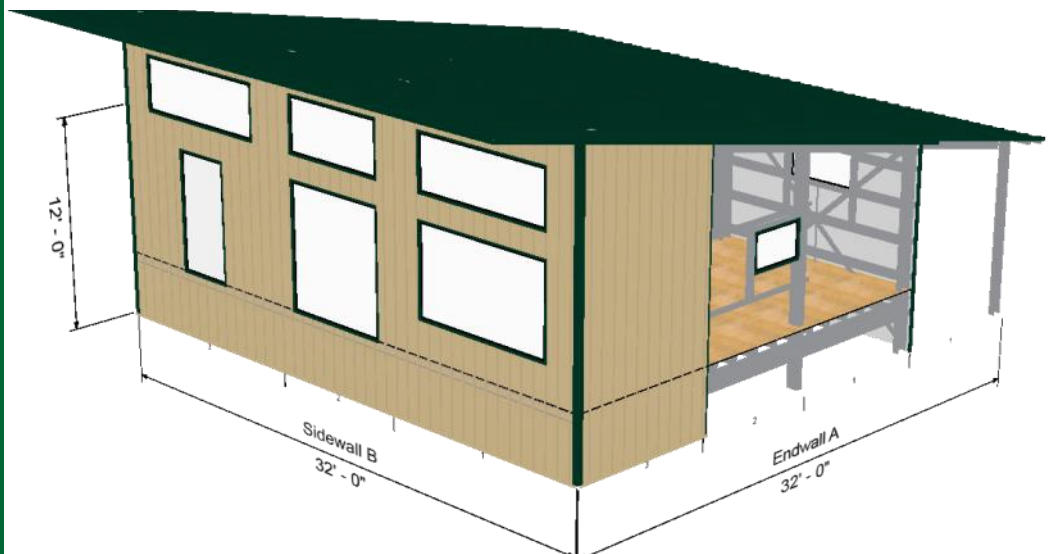


Two bedroom cabin illustration using ACT Dimension Design Software

Here are Two Bedroom cabin illustrations using the ACT Dimension Design Software. This is just one marketing tool that combines the engineering and design with a visual of the end product. Once the model is designed a complete material take off sheet can be created. Once the material take off is created the purchase orders can be generated, sent to vendors, schedule onsite delivery of materials and arrange for foundation installation., building installation, etc.

In Many cases structural Engineered Drawings complete with calculations can be acquired in a matter of a few days and materials can be delivered in as little as two weeks. [Go to ACT Building Systems-youtube to watch a 4 min video on how our system works.](#)

Though this technology is new to the US there may be as many as 1 million structures made of cold formed steel existing in the world today. This is a proven technology now being marketed with a superior software system that brings it all together. The ACT Dimension Software gives the user a great building system to market in a way more profitable, more environmentally friendly, with a longer useful life providing a safe Pre-Engineered shelter to withstand the rigors



Two bedroom cabin not showing the front deck

# ACT and it's positive affects to your profit centers.

Having ACT as an active partner in your contracting business allows you access to more profit centers in your business. Our Pre-Engineered Cold Formed Steel Building Design program offers you the contractor an opportunity to sell even more services. Excavation services, concrete services, erection services and interior finish services are just some of the additional profit centers one can add to the ACT system thereby giving your company a tremendous vertical product service offering to an existing customer. And all this can be done without additional marketing costs.

Provide a great sustainable building product sporting a great performance record world-wide. With the Act Dimensions Design Software System one can literally build their business one building at a time and watch it grow exponentially.

The choice is yours. You need to make your own decision. As you can see ACT Dimensions gives you're a platform and a resource to support you and your business at a price that is incredibly low. \$3,000.00 to acquire your very own distributorship, with access to all our vendors and their building products, with access our engineering staff and all there services.

Full software support complete with free up-grades and bug fixes without additional charges. Even the management team of ACT is a variable expense. We don't make money unless you sell buildings. If you've been searching for a way to increase your business and/or profits or if you've been looking for a business model to start working for yourself this could very well be what you're looking for.

**Call us today! (503)-522-0214**

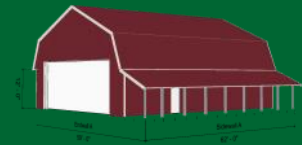
CP Green Buildings LLC  
10117 SE Sunnyside Rd.  
Suite F-1141  
Clackamas, OR. 97015

## Contact Us

Give us a call for more information about the ACT Dimensions Design Software system or becoming an OutBack Steel Building Distributor.

**To: Dan Loftis C/O**

**CP Green Buildings LLC**  
10117 SE Sunnyside Rd. Suite F  
-1141 Clackamas, OR. 97015



Call my cell 503.522.0214

Dan Loftis

Distributor and share holder

PLACE  
STAMP  
HERE